

## J.S. Bach St John Passion

How to read from these scordatura parts:

### Numbers 31 (19) *Betrachte, meine Seel* and 32 (20) *Erwäge, wie sein blutgefärbter Rücken*

The original parts were written in 'real' (sounding pitch) notation and give no indication of the intended tuning of the viola d'amore. These parts have been rewritten in scordatura notation to make them easier to read. There are two versions, one for the tuning D, g, d', g', b flat', d'' and one for the tuning D, g, b flat', d', g', d''.

Use the tuning indicated before the first bar. Pretend you are playing on an instrument tuned in fifths like a violin (g,d,a,e).

As the viola d'amore has 6 (or 7) playing strings we read the notation as follows: (all read as if the four strings indicated are the strings of the violin).

Treble clef = the top four strings

Alto clef = the middle four strings

Bass clef = the bottom four strings

(N.B. These parts are for a six string instrument – if you have a seven string instrument, disregard the lowest string)

Leon King, March 2010

# Johannes Passion

## No. 31 (19) Arioso (Basso) *Betrachte, meine Seel*

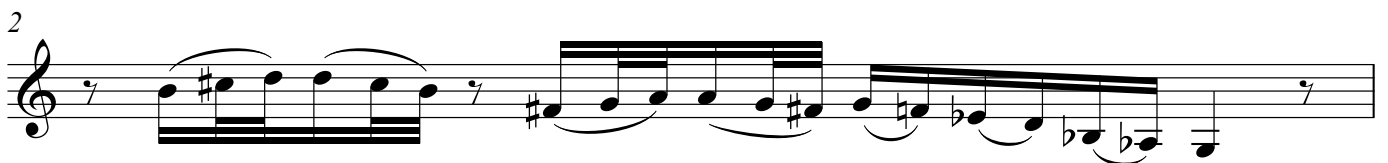
J.S. Bach

*Accordatura*

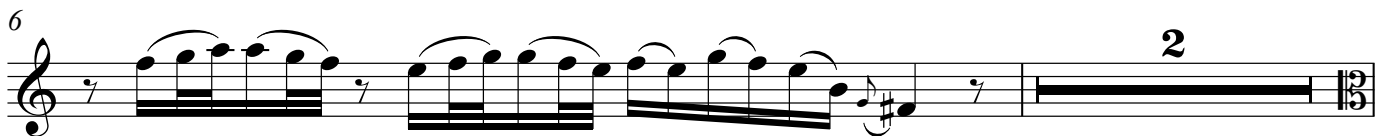
**Adagio**



## No. 32 (20) Aria (Tenore) *Erwäge, wie sein blutgefärbter Rücken*



Viola d'amore 1


6 

9 

10 

13 

14 

18 

19 

20 

21 

22 

24 

Viola d'amore 1

26

28

31

32

34

36

37

38

39

40

41

*Da Capo*